



JSC «MALKINSKOYE»

About
company



History of Malkinskoye springs discovery

Jean-Baptiste Barthelemy de Lesseps (member of the Laperouse's expedition) was the first to provide information about the existence of Malkinskiye warm waters when he traveled past Malki settlement in 1787.

In the article "Kamchatka's first doctors" (by F.Lodis) it is mentioned that P. Koshelev, major-general commandant of Kamchatka, opened a medical center on Malkinskiye springs in 1802.

Georg Erman gave a detailed description of the springs and noted that there was a hospital.

He published the chemical analysis of the Malkinskaya hot water, conducted in Berlin by Professor Rammelsberg.

Malkinskiy spring with cold acidulous water was discovered in autumn, 1934.



“Malkinskoye” deposit
of cold acidulous water

The deposit of artesian water is situated in the environmentally sound and undeveloped area of Kamchatka, 130 km from Petropavlovsk-Kamchatskiy, the krai capital, on the right bank of the Bystraya river (at the foot of the Malkinskiy ridge).

ЛИЦЕНЗИЯ
на право пользования недрами

серия **П Т Р** номер **0 0 6 2 2** вид лицензии **В Э**

Выдана Закрытому акционерному обществу «Малкинское»
(субъект предпринимательской деятельности, получивший
(ЗАО «Малкинское»)
защиту лицензии)

в лице генерального директора
(Ф. И. О. лица, представляющего субъект предпринимательской деятельности)
Морозова Алексея Алексеевича

с целевым назначением и видами работ добычи питьевых подземных вод
для питьевого водоснабжения и коммерческого розлива воды

Участок недр расположен в с/Малка Елизовского района
(наименование населенного пункта,
Камчатского края Российской Федерации
района, области, края, республики)

Описание границ участка недр, координаты угловых точек, копии
топопланов, разрезов и др. приводятся в приложении 1: 5
(N прилож.)

Право на пользование земельными участками получено от _____
(наименование органа, выдавшего разрешение, номер постановления, дата)

Копии документов и описание границ земельного участка приводятся в
приложении _____ (номер приложения, количество страниц)

Участок недр имеет статус торного отвода
(геологического или торного отвода)
20.01.2030г.

Срок окончания действия лицензии _____ (число, месяц, год)

МИНИСТЕРСТВО ПРИРОДНЫХ РЕСУРСОВ РФ
ФЕДЕРАЛЬНОЕ АГЕНТСТВО ПО НЕДРОПОЛЬЗОВАНИЮ
УПРАВЛЕНИЕ ПО НЕДРОПОЛЬЗОВАНИЮ
ПО КАМЧАТСКОМУ КРАЮ
ЗАРЕГИСТРИРОВАНО
« 21 » ЯНВАРЯ 20 10 г.
№ 622 (ПТР 00622 62)
Подпись уполномоченного представителя
Шустова И.С.

Extraction license





The mineral drinking water factory JSC "Malkinskoye" is located right on the site of the Malkinskoye deposit of acidulous water.

The factory's position provides the environmental safety and reliability of the product quality by minimization of losses at the stage of water transportation from the well to the production department. In addition, the availability of approach roads makes it possible to send batches of the final product for shipping in Petropavlovsk-Kamchatskiy port in the shortest time. Industrial and agricultural plants are more than 10 km away from JSC "Malkinskoye", the fact that has a positive impact on the product quality. The area of the Malkinskoye deposit belongs to the protected nature zones according Government Decree dated 1994.

The factory began producing mineral water in December 1998. The equipment is modernized on a regular basis to maintain the highest standards of the final product quality. Today the company's product line includes more than 20 items.





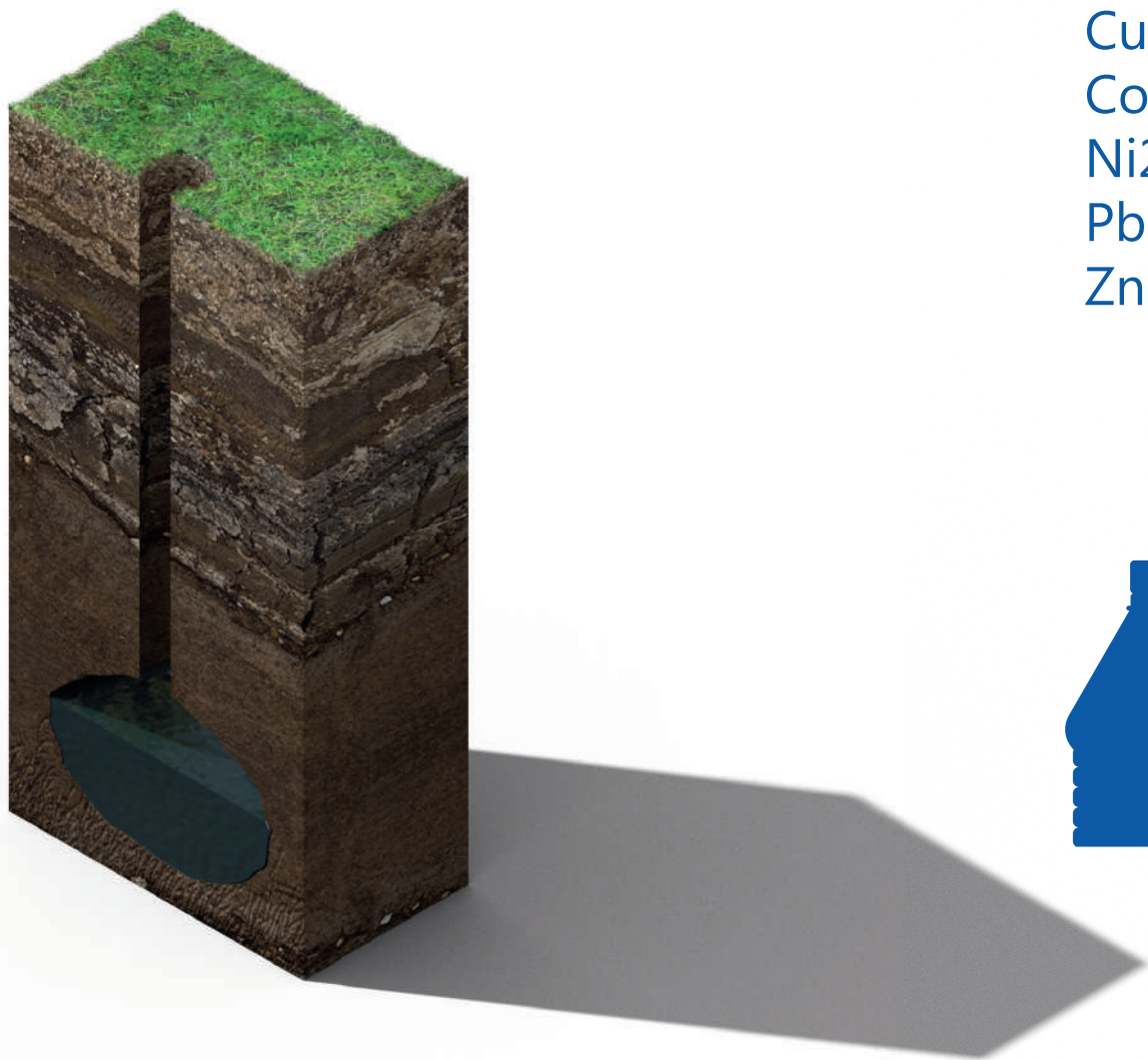
Water composition

Two wells with a different chemical composition provide water for production.

Well №14 used for producing mineral drinking water “Malkinskaya №1” (TDS level is up to 10g/dm3).

The depth of the artesian well is **610 m.**

Due to the unique chemical composition the water is lacking a bitter taste characteristic of some mineral waters. Healing properties of the water are conditional on the ion-saline and gas composition and a higher concentration of bioactive components.
The water is notable for an average TDS concentration (3.0-5.4 g/dm3).



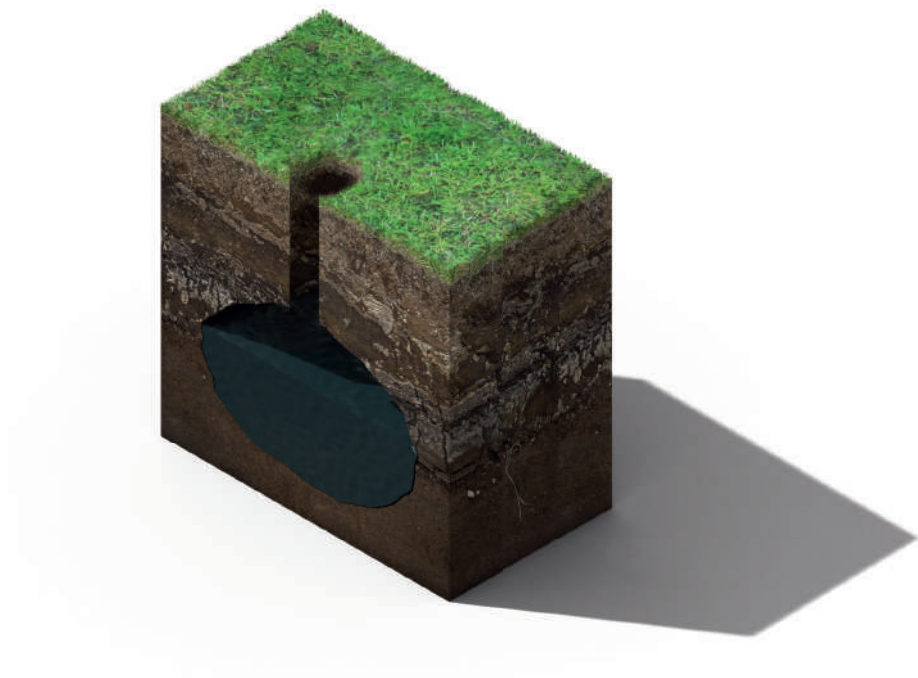
Element	Content mg/cm3	Element	Content mg/cm3
Li ⁺	1-5	Cd ²⁺	-0.01
NH ₄ ⁺	0-6	Ag ²⁺	0-0.45
K ⁺	30-100	F ⁻	0-1.0
Na ⁺	500-1200	Cl ⁻	300-700
Mg ²⁺	40-120	Br ⁻	0-3
Ca ²⁺	70-350	I ⁻	0-1
Fe ²⁺	10-30	SO ₄ ²⁻	0-8
Sr ²⁺	0-3	HCO ₃ ³⁻	1500-2700
Ba ²⁺	0-1	CO ₂ ^{CB}	500-1200
Al ₂ ⁺	0-0.06	H ₂ SiO ₃	60-140
Mn ₂ ⁺	0-0.05	H ₃ BO ₃	40-200
Cu ₂ ⁺	0-0.03	PO ₄	0-0.02
Co ₂ ⁺	0-0.15	C org	0.01-0.4
Ni ₂ ⁺	0-0.33	total salt content	2000 –5000
Pb ₂ ⁺	0-0.05	pH	6.2 – 6.8
Zn ₂ ⁺	0-0.5	T (C°)	4-12



In the final product the content of:
Fe – less than 0.3 mg/dm3
CO₂ – more than 4 g/dm3

Well N°9P is used for producing mineral drinking water “Malki” (TDS level is less than 1g/dm3) and flavored soft drinks.

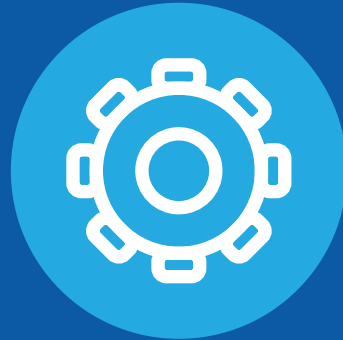
The depth of the well is **60 m.**



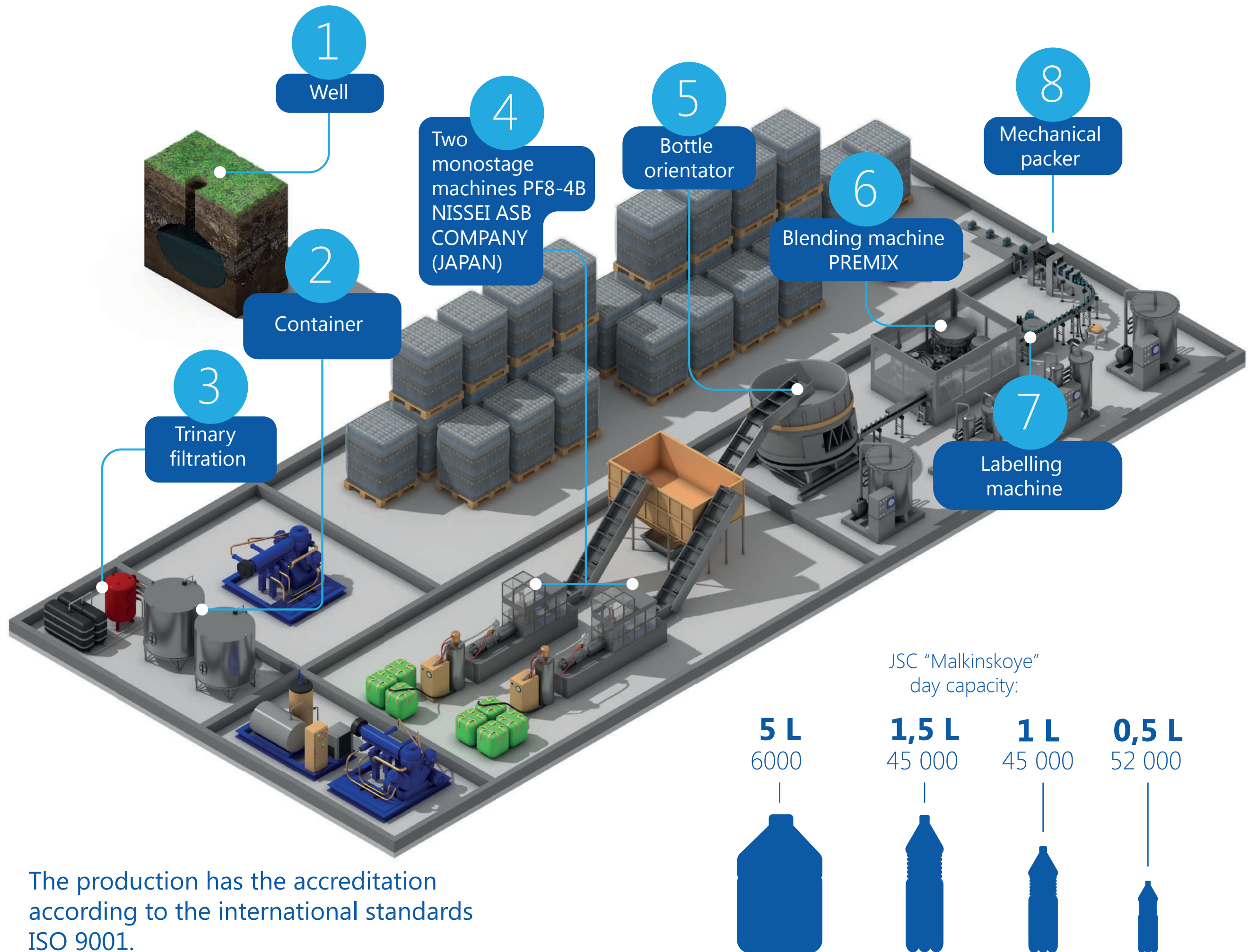
Element	Content mg/cm3	Element	Content mg/cm3	Not found
K+	0-1	Cl-	5-15	Li
Na+	5-10	NO2-	0	NH4
Mg2+	5-10	NO3-	0-2	Sr
Ca	5-15	SO42-	0-15	Al
Fe2+	< 0.3	HCO3-	50-70	Co
Mn2+	0-0.02	CO2	1-5	Ni
Cu2+	0-0.02	SiO2	10-20	Pb
Zn2+	0-0.04	B	0-0.2	Cd
		total salt content	100-150	Ag
		pH	7.0-8.0	F
		T (C°)	4-12	Be
				Se
				Mo
				Hg
				Cr
				As
				PO4
				C org
				Carbolic acid



Water is lacking heavy metal salts, organic pollutants and malignant microorganisms. Mineral drinking water “Malki” tones up the body, regulates the digestion and blood circulation and removes toxins from the organism. “Malki” can be applied as a part of a dietetic nutrition, in medicine and beauty therapy.



Production process





Bottle production

Monostage machine
PF8-4B (NISSEI ASB)



Stages of the production:

1. Drying of PET pellets up to 160-170°C.
2. Fabrication of bottle parisons in the mold.
3. Blowing in the blow press mold and instant cooling.
4. Orientator puts the bottle with its neck up.





Water preparation and bottle filling



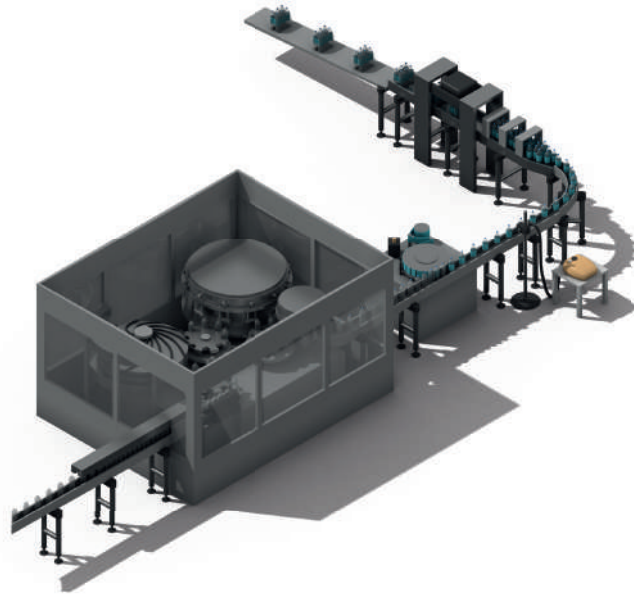
Stages of water preparation:

1. Water comes from the well into the container.
2. Water filtration:
 - Sand filter;
 - Bactericide UV installation;
 - Cardboard filter.
3. Water is blended with natural carbon dioxide in PREMIX blending machine.
4. From PREMIX water is transported into the filling machine.





Bottling and packaging



Stages:

1. PREMIX transports water into the filling machine.
2. Filling machine fills the bottle passed in from Orientator.
3. The bottled is corked and labeled.
4. Packaging machine covers bottles (6-12 units) with shrink foil.
5. Units are put on to the pallets.





Quality management

Confirming its status of the high-quality manufacturer, the factory first in Kamchatka got the accreditation of the products according to the international standards ISO 9001. Such certificate indicates the fact that the factory has an operating quality managing system that excludes the possibility of the faulty production output.

On-site production laboratory consists of two departments – chemical and bacteriologic. It has the most up-to-date equipment and instruments that provide a successful achievement of the researches in concordance with scientific-technical documentation.

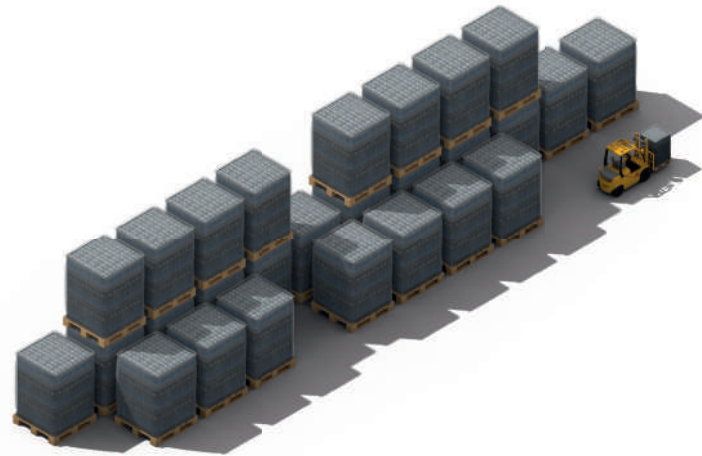
The staff has a special education and the laboratory's reference number is 41.KЦ.08.001.Л.000038.10.07.

The factory's products are tested in the accredited laboratories under GOST standards and are put out in accordance with normative and technical documentation. The staff responsible for the engineering has a product-oriented training.





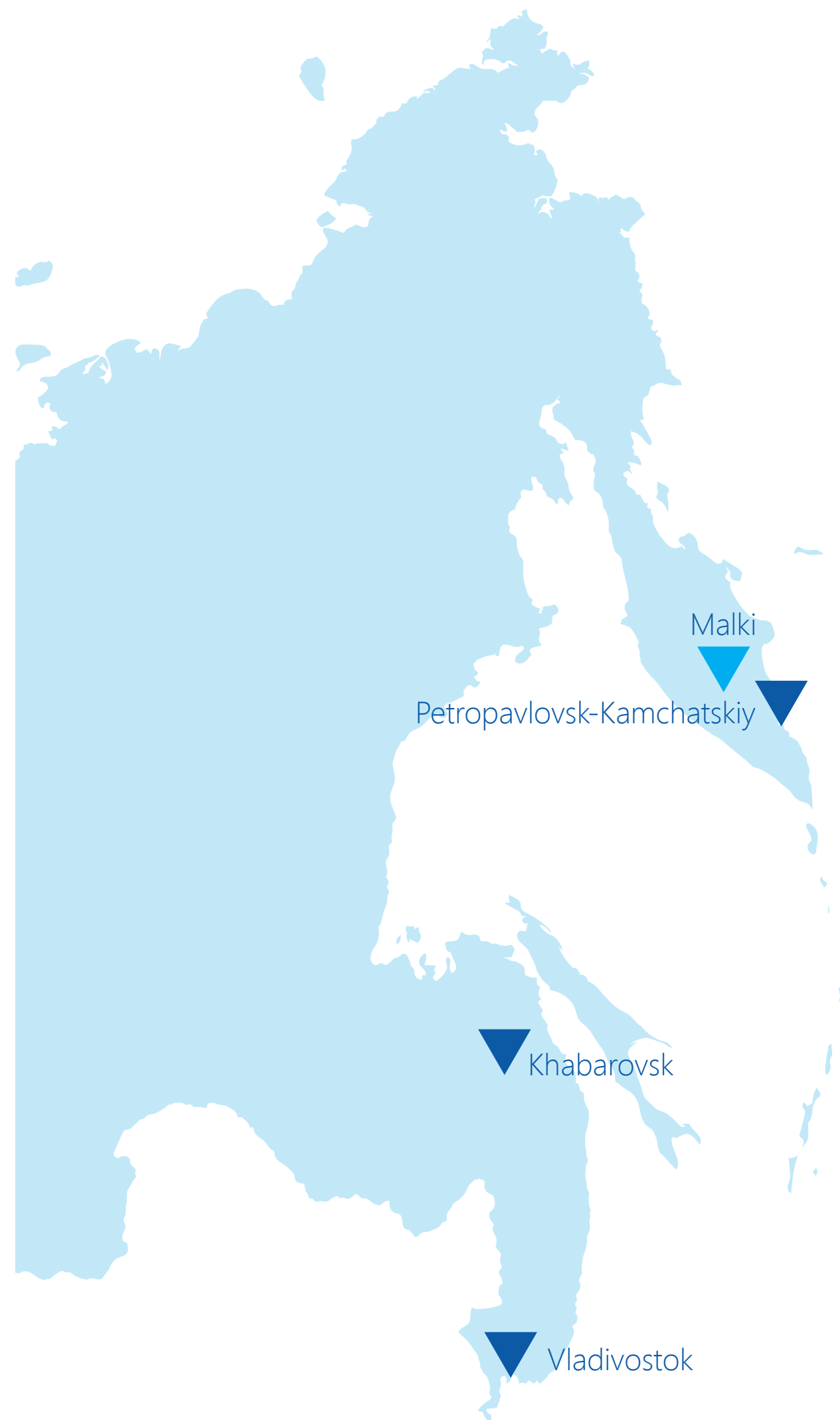
Final product sell-off



Trucks deliver the final product to the wholesale stores in Petropavlovsk-Kamchatskiy and Elizovo for subsequent retail trade in Kamchatskiy krai.

To send the final product outward the peninsula water is transported to the Sea Commercial Port of Petropavlovsk-Kamchatskiy to form shipping containers and ship off to the business partners in Vladivostok, Khabarovsk, China, South Korea or Japan.

Moreover, local enterprises buy the bottled mineral water for the subsequent manufacturing of food products.



JSC "Malkinskoye"

19/A, Kruchiny str., Yelizovo,
Kamchatka region,
684010, Russia
fax: (4152) 411-850
tel: (4152) 411-644
e-mail:
secretar@malki.kamchatka.ru
www.malki.ru

Business partners:

Primorskiy krai

ООО "Vladtorg"
49 Fadeeva St
Vladivostok
tel.: (423) 230-01-86, 230-07-32

Khabarovskiy krai

ООО "Regionalnaya Torgovaya
Kompaniya" 8 Sidorenko St
Khabarovsk
tel.: (4212) 590-670, 590-685

Kamchatskiy krai

"Shamsa" supermarket chain
67 Pobeda Ave.
Petropavlovsk-Kamchatskiy
tel.: (4152) 41-10-11, 41-10-12,
fax: 41-10-13

Retailer on the territory of Kamchatkiy krai

IE N. Stepantsova
683006 Warehouse №16, 21
Vulkannaya St
Petropavlovsk-Kamchatskiy
Kamchatskiy krai
tel: +7 (4152) 23-49-45;
+7 (4152) 29-73-19
e-mail:
voland@malki.kamchatka.ru